

MONTHLY MEMBERSHIP PROGRESS REPORT

LOCATION TEXAS

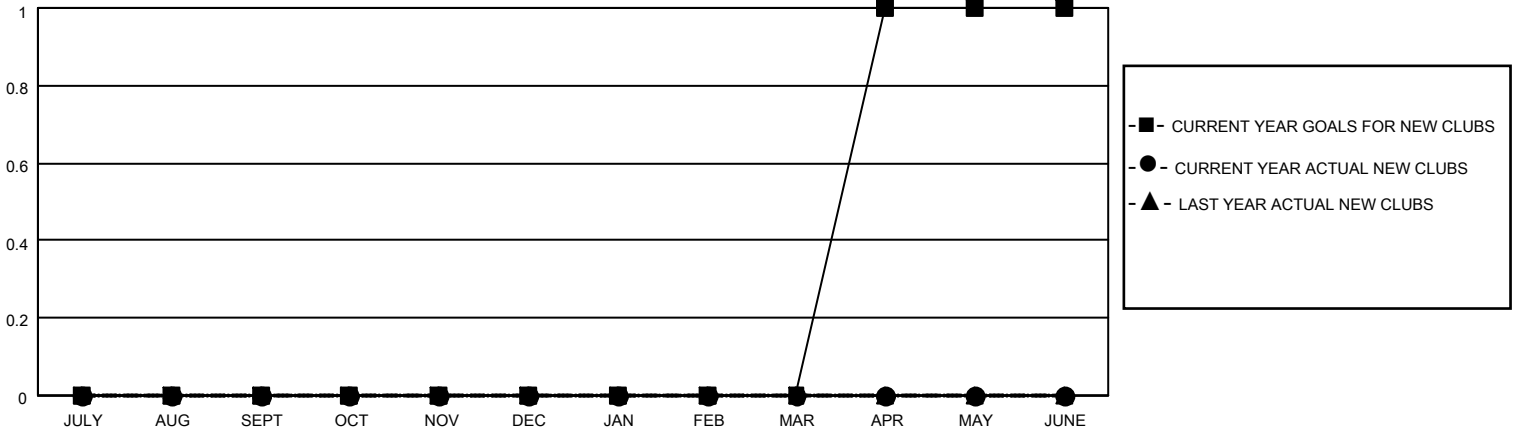
District 2 X2

Results as of: 1/31/2022

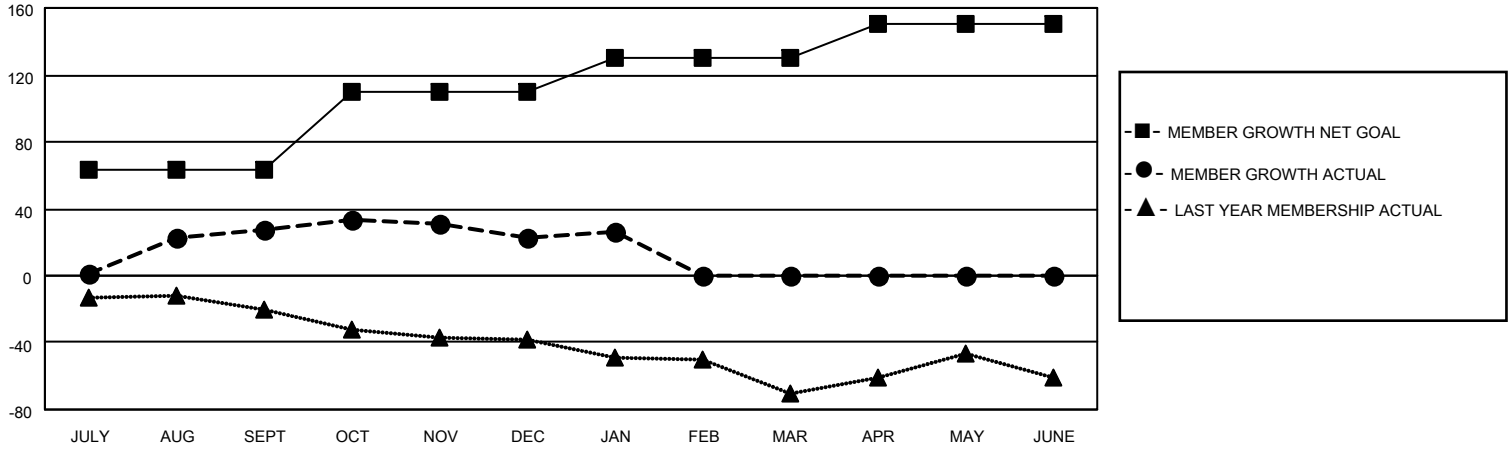
Clubs			
RESULTS FOR 2021-2022			
QUARTER	NEW CLUB GOAL	NEW CLUBS	DROPPED CLUBS
JULY/AUG/SEPT	0	0	0
OCT/NOV/DEC	0	0	0
JAN/FEB/MAR	0	0	0
APR/MAY/JUNE	1	0	0

Members			
RESULTS FOR 2021-2022			
QUARTER	MEMBER GROWTH NET GOAL	MEMBER GROWTH ACTUAL	DROPPED MEMBERS ACTUAL (including transfers)
JULY/AUG/SEPT	63	63	31
OCT/NOV/DEC	47	54	51
JAN/FEB/MAR	20	18	15
APR/MAY/JUNE	20	0	0

GOALS AND ACTUAL NEW CLUBS CUMULATIVE



GOALS AND ACTUAL MEMBERS CUMULATIVE



DROPPED CLUBS: 0

24 CLUBS OF 39 ADDED 1 OR MORE NEW MEMBERS

GENDER DISTRIBUTION

MALE	577 (57.76%)
FEMALE	422 (42.24%)
NON BINARY	0 (0.00%)
PREFER NOT TO ANSWER	0 (0.00%)

DROPPED MEMBERS

[CLICK HERE FOR CUMULATIVE MEMBERSHIP DATA](#)

DECEASED	11
CLUB CANCELLED	0
OTHER	86
TOTAL	97

TOTAL FAMILY UNIT MEMBERS 186

FAMILY MEMBERS PAYING HALF DUES 95